

---

---

# MAJEXTAND M

— Installation and Operating instruction —

---

---

# 1. About Majextand M

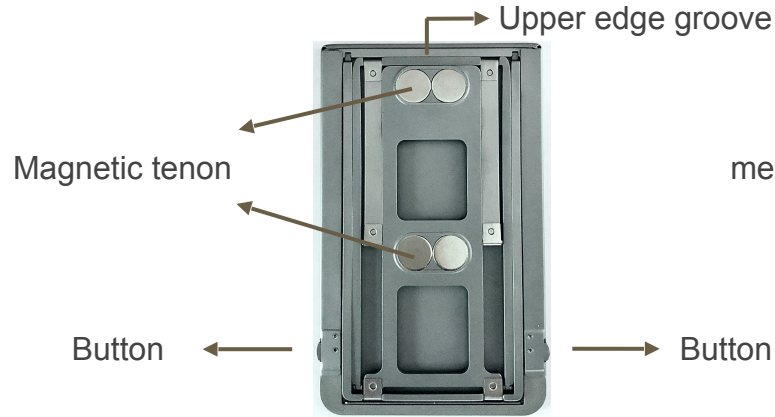
## ❏ Contains:

1 Majextand M, 1 adhesive docking sheet

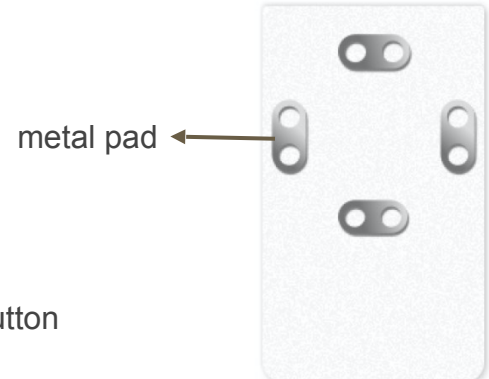
### ▪ Front



### ▪ Back



### ▪ Adhesive docking sheet



## 2. Specifications:

### ☐ Specifications:

| **Origin** 100% in Taiwan

| **Dimension** 105mm x 63.5mm

| **Materials** Stainless steel SUS#301/304/420

| **Weight** 75g

| **Thickness** 2.3mm

### ☐ Caution :

| Majextand M is not for children under the age of seven (7).

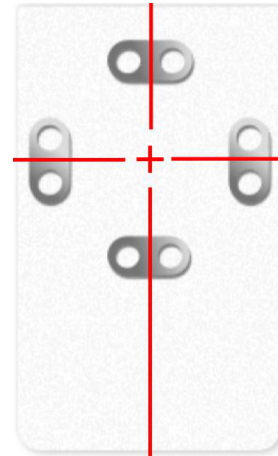
| This product contains magnets. Please stay away from heart rate regulators, insulin pumps, credit cards, compasses or precision instruments & objects that are easily affected by magnetism.

### ☐ Compatibility:

- Majextand M can fit on the device(with or without its case) which is lighter than 500 grams, and the stickable area is longer than 4" and wider than 2.4".
- The Majextand M adhesive docking sheet can be applied to the hard materials and flat surfaces like glass, metal, PC,... . We don't recommend applying it to curved, uneven textured surfaces or soft materials like silicone or rubber phone cases.

### 3. Majextand M adhesive docking sheet installation notes

1. Wipe the device's surface by using an **alcohol pad**.
2. Align the center of the four metal pads and **target the center** of the device or phone case.

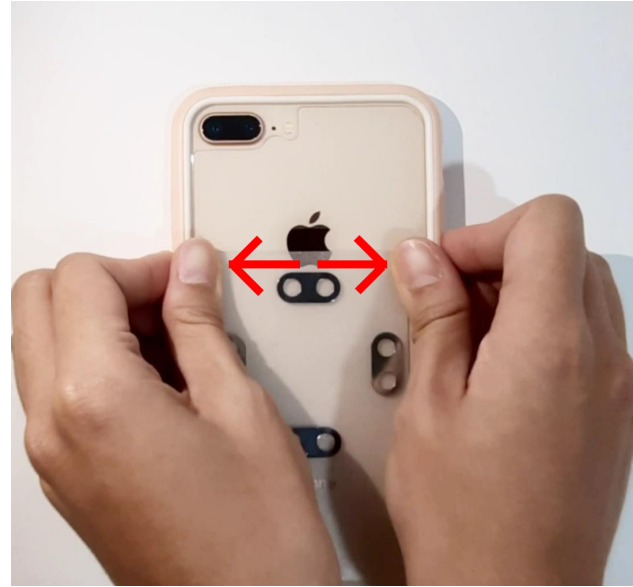




3. Applying sequence (1):  
From top to bottom, set the adhesive docking sheet at the center of the device.



4. Applying sequence (2):  
Squeeze the bubble from the center to the edge.

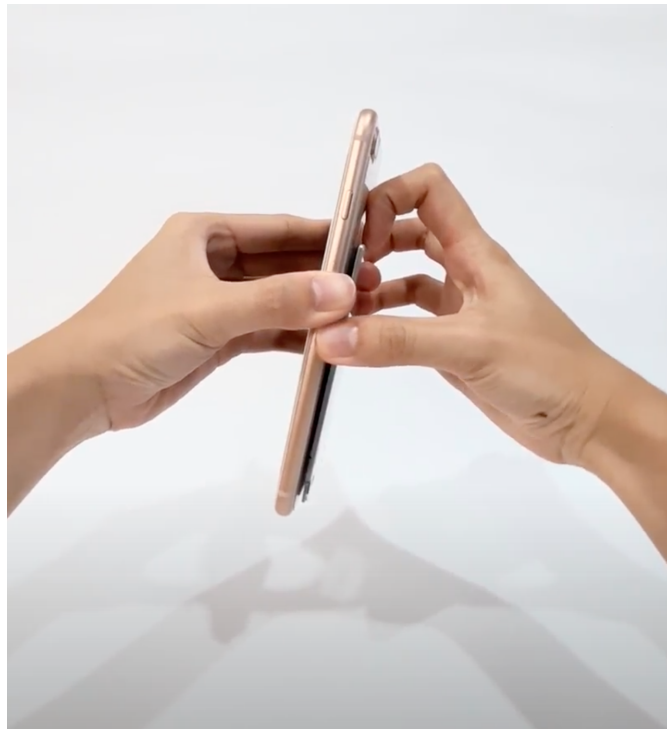


5. Make sure that there is **no bubble between adhesive docking sheet and the device** to complete the installation.



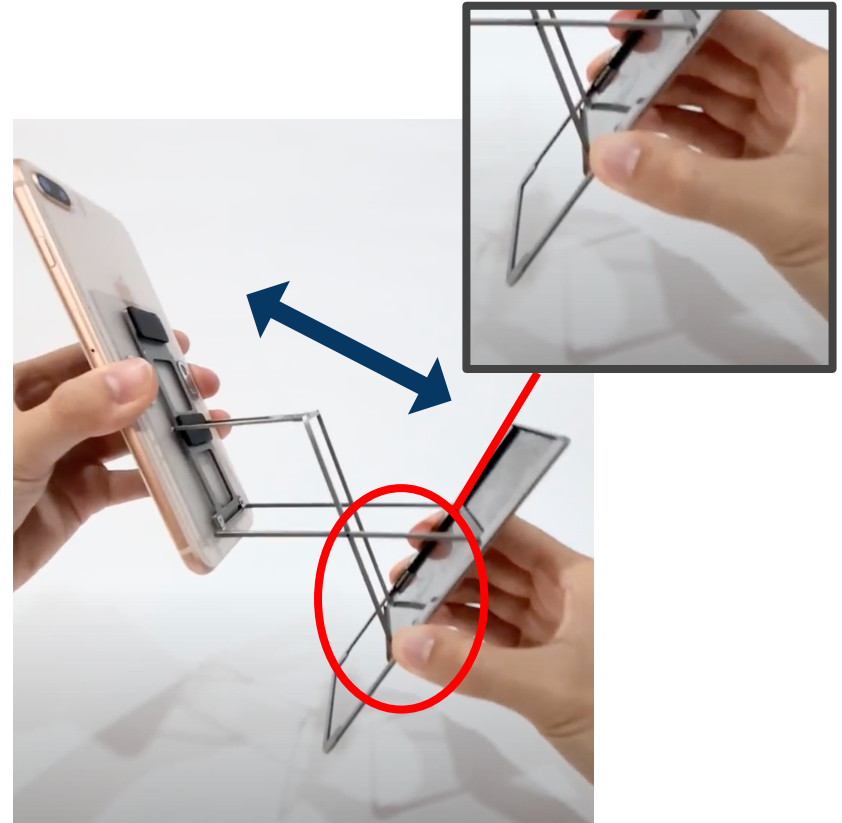
## 4. Operating instruction

1. Please attach Majextand M onto the **adhesive docking sheet's metal pads**, align gently until both parts be jointed.
1. Put the forefinger on the upper edge groove Majextand M base and pull.

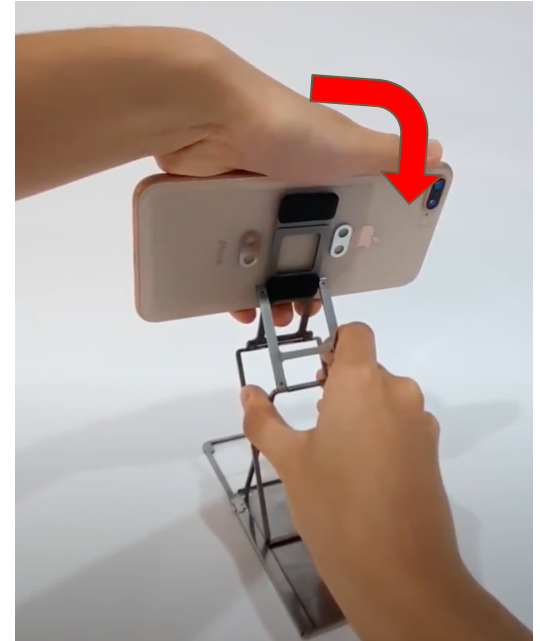


**3. Press the buttons on both sides to adjust the angle of Majextand M.**

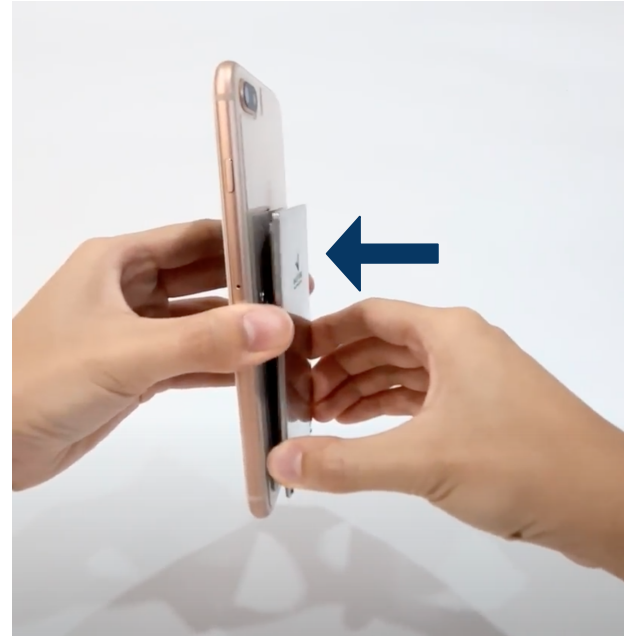
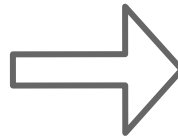
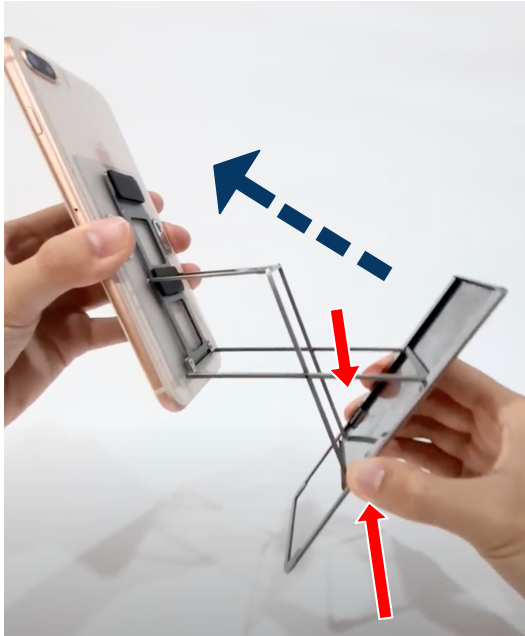
★ Reminder : When adjusting Majextand M, please be careful.



4. Remove the device from Majextand M to switch the horizontal and vertical.



5. Press the buttons on both sides to close the Majextand M.



★ Reminder : When closing Majextand M, please move it slowly and be careful.